

### 1

#### Preparing for Success

Before installing the BarCodeJet®, follow the printer manufacturer’s instructions for installing the printer on the network. Confirm that a page can be printed from the system that will be used for barcode printing.

Each printer model is unique. The printer manufacturer’s instructions, web site, and customer support always provide the best printer installation assistance prior to installing the BarCodeJet.

The BarCodeJet requires a PCL5/5e print stream. If using Windows, select the printer’s Windows PCL5/5e driver. If there is no option to specify a driver, or if the printer is already installed, confirm the driver in use is a PCL5/5e driver.

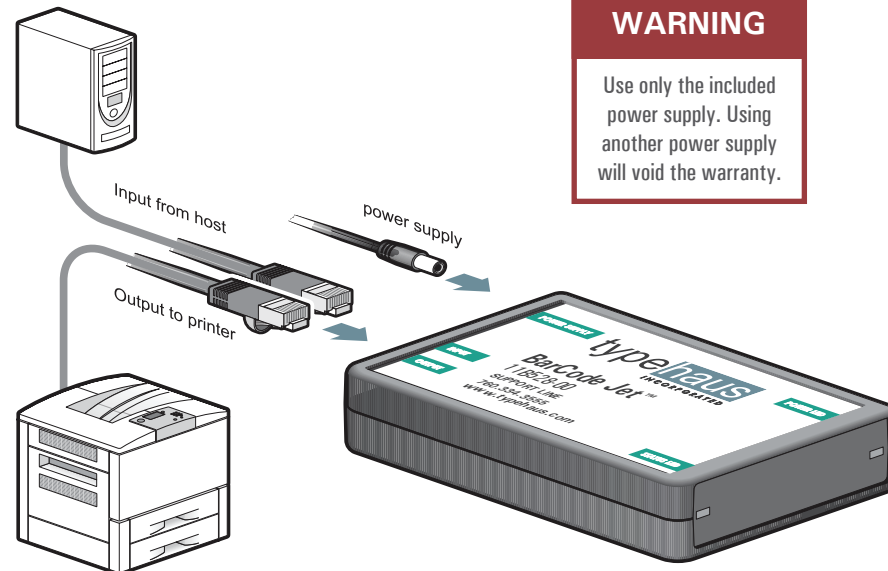
If needed, a Windows PCL5/5e driver can normally be found on the printer manufacturer’s web site or printer CD. To install a manufacturer supplied driver, follow the manufacturer’s instructions for the driver.

### 2

#### Installing the BarCodeJet

Be sure to install and test the printer on the network before proceeding.

Power on the laser printer and wait for ready/online status.



#### WARNING

Use only the included power supply. Using another power supply will void the warranty.

### 7

Insert the round power supply connector into the BarCodeJet “Power Supply” port. The BarCodeJet Power LED will light green (possibly after blinking orange), then the Status LED will light green.

### 3

Detach the Ethernet network cable from the printer and attach it to the “Input from Host” port on the BarCodeJet.

### 8

Congratulations!  
You are now ready to print barcodes using your BarCodeJet. To test your BarCodeJet, see the reverse side of these instructions.

### 4

Attach the supplied 3 foot Ethernet cable to the printer’s Ethernet port (the same port from which the network cable was detached in the previous step).

### 5

Attach the other end of the supplied 3 foot Ethernet cable to the “Output to Printer” port on the BarCodeJet.

### 6

Plug the supplied 5 volt power supply into a 110 volt outlet. It is preferable, but not required, to plug it into the same power strip as the printer. **See WARNING box on this page.**

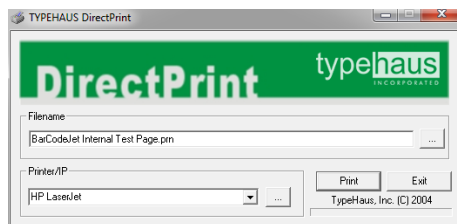
TypeHaus Reorder Part Number: 11B528-00

If you wish to test your BarCodeJet, the TypeHaus web site has a Windows testing tool available for download.

Take your browser to:

<http://www.typehaus.com>

then select Support > Downloads > Bar-CodeJet (External). Download the TypeHaus DirectPrint utility and the BarCodeJet Test Page.



1. After downloading both files to your system, double click on DirectPrint.exe.
2. In the "Filename" section, click the "..." button. Browse to select the file "Bar-CodeJet Test Page.prn" you downloaded.
3. In the "Printer/IP" section, select the printer from the dropdown list or enter the IP address if it is attached to the network.
4. Select the "Print" button.
5. Compare the printed test page to the sample shown to the right.
6. Select the "Exit" button to close the application.

### Sample BarCodeJet Test Page

BarCodeJet® Internal

Test Page

typehaus  
INCORPORATED

MSI Plessey

987654



PDF417



Code 39



012ABC8901

UPC-A



Code 128 Auto A/B/C



Code 25 Industrial



012345678901

EAN-13



0123456789012

EAN-8



12345670

Code 128C



12345678

© 2018 TypeHaus, Inc.  
All rights reserved.  
(3545-180808A)