

# BarCodeJet® Internal

## Installation & Test Guide For HP LaserJets & MFPs with Compact Flash

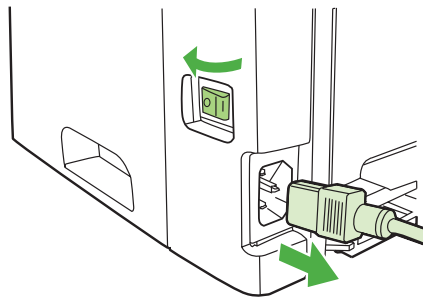
**typehaus**  
INCORPORATED

### Congratulations!

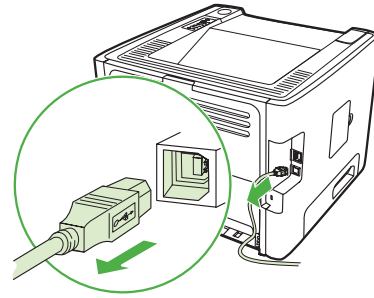
You are now ready to print barcodes using your BarCodeJet. The TypeHaus web site has a Windows testing tool available for download. Take your browser to:

<http://www.typehaus.com>

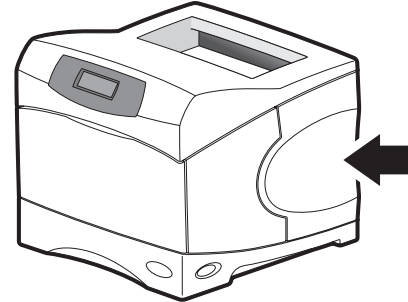
Select Support ⇨ Downloads ⇨ BarCodeJet Internal. Download the TypeHaus DirectPrint utility and the BarCodeJet Test Page.



- 1 Use the power switch to turn off the printer and then unplug the power cord from the printer.

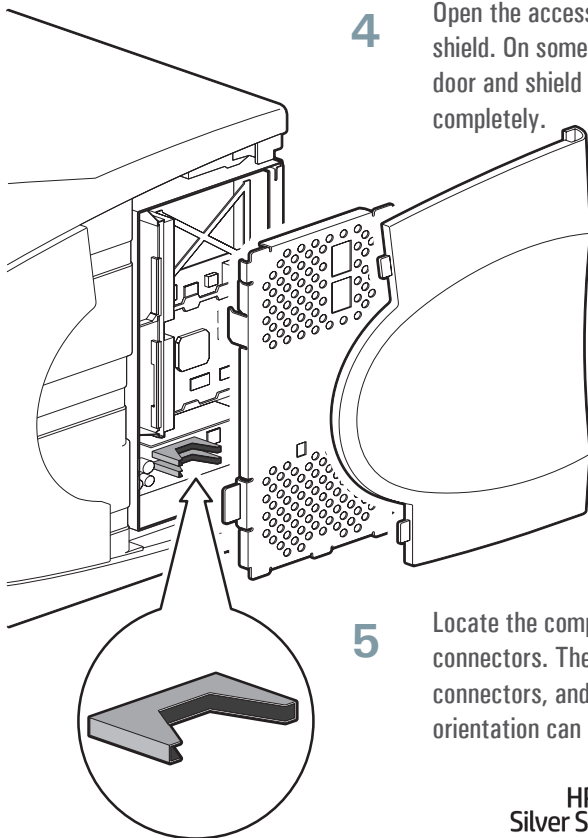


- 2 Unplug all remaining cables and cords from the printer.



- 3 Locate the access door located on the side of the printer. The location can vary by model.

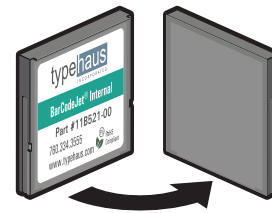
- 4 Open the access door and metal shield. On some models the door and shield may remove completely.



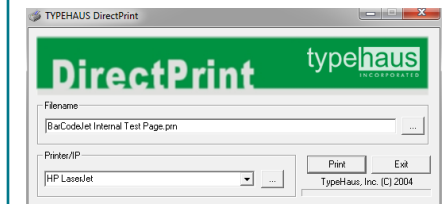
- 5 Locate the compact flash (CF) connectors. The number of CF connectors, and the location and orientation can vary by model.



- 6 Insert the solution into any open CF connector. Do not remove any existing CF cards. The card will only insert in one orientation. If it does not slide easily, rotate it and try again. A very small amount of extra pressure will be necessary at the very end to make sure the card is completely plugged into the short pins at the base of the connector. Never use strong force. Strong force may damage your printer.



- 7 Close the shield and access door, reconnect all cables and cords, then turn the power switch on.



1. After downloading both files to your system, double click on DirectPrint.exe.
2. In the "Filename" section, click the "..." button. Browse to select the file "BarCodeJet Test Page.prn" you downloaded.
3. In the "Printer/IP" section, select the printer from the dropdown list or enter the IP address if it is attached to the network.
4. Select the "Print" button.
5. Compare the printed test page to the sample shown to the right.
6. Select the "Exit" button to close the application.

TypeHaus Reorder Part Number: 11B521-00

HP JetAdvantage  
Silver Solution Partner



760.334.3555  
[www.typehaus.com](http://www.typehaus.com)

© 2019 TypeHaus, Inc. All rights reserved. (50067-190701A)

## BarCodeJet® Internal

## Test Page

MSI Plessey



987654

PDF417



Code 39



012ABC8901

UPC-A



12

Code 128 Auto A/B/C



☺ ♥ ♦ ♣ ♠ ♂ abCDE

Code 25 Industrial



012345678901

EAN-13



12345

EAN-8



12

12345678

Code 128C



© 2019 TypeHaus, Inc.  
All rights reserved.  
(50070-190528A)