

1

Preparing for Success

Before installing the CheckBox™, follow the printer manufacturer's instructions for installing the printer on the network. Confirm that the system that will be used for printing can print to the printer before the CheckBox is installed.

Each printer model is unique. The printer manufacturer's instructions, web site, and customer support always provide the best printer installation assistance prior to installing the CheckBox.

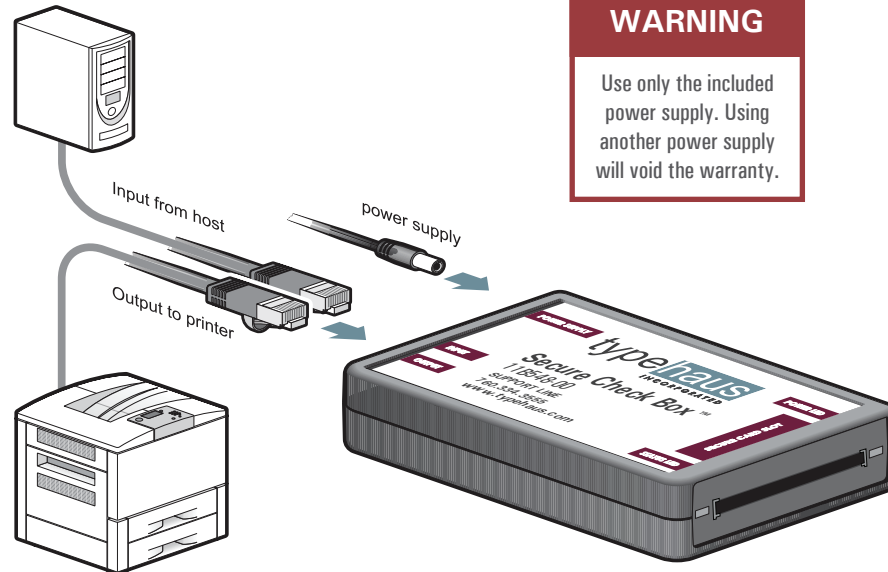
The CheckBox requires that PCL5/5e commands be used for printing. Depending upon how your application works, be sure the application is configured to use PCL5/5e when printing.

Every application has its own unique configuration settings. Applications can also vary depending upon the type of computer on which they are running.

2

Installing the CheckBox

Be sure to install and test the printer on the network before proceeding. Power on the laser printer and wait for ready/online status.



WARNING

Use only the included power supply. Using another power supply will void the warranty.

3

Detach the Ethernet network cable from the printer and attach it to the "Input from Host" port on the CheckBox.

4

Attach the supplied 3 foot Ethernet cable to the printer's Ethernet port (the same port from which the network cable was detached in the previous step).

5

Attach the other end of the supplied 3 foot Ethernet cable to the "Output to Printer" port on the CheckBox.

6

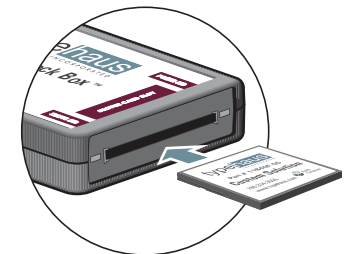
Plug the supplied 5 volt power supply into a 110 volt outlet. It is preferable, but not required, to plug it into the same power strip as the printer. See **WARNING** box on this page.

7

Insert the round power supply connector into the CheckBox "Power Supply" port. The CheckBox Power LED will light green (possibly after blinking orange), then the Status LED will light green.

8

Insert the CheckBox's memory card to enable printing of the secured resources.



Congratulations!

You are now ready to the print using the custom resources contained in the secure memory card of your CheckBox.

TypeHaus Reorder Part Number: 11B548-00

TypeHaus, Inc.
P.O. Box 1286
Cardiff, CA 92008
760.334.3555
www.typehaus.com

© 2020 TypeHaus, Inc. All rights reserved. (50027-200730A)