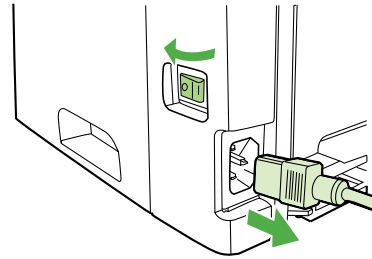


Installation & Test Guide

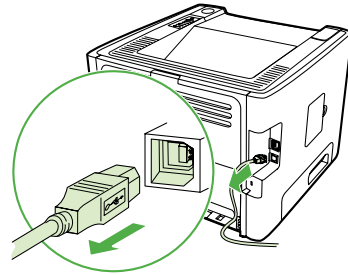
For HP LaserJets & MFPs with 144 Pin DIMM

Extending the Resources and Abilities of Your Printer



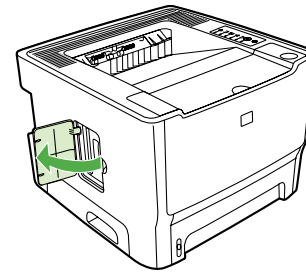
1

Use the power switch to turn off the printer and then unplug the power cord from the printer.



2

Unplug all remaining cables and cords from the printer.

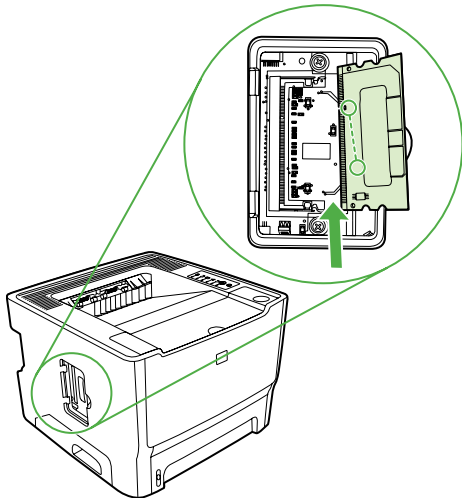
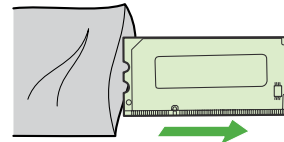


3

Carefully open the DIMM access door located on the left side of the printer.

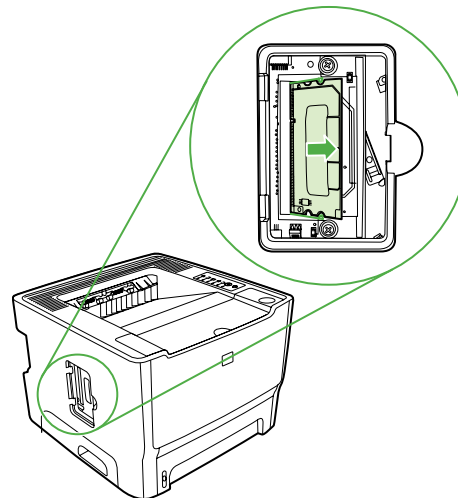
4

Remove the DIMM from the anti-static bag it came in, grasping the DIMM along the top edge away from the gold contacts.



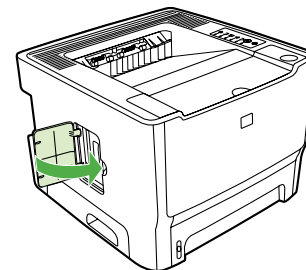
5

The DIMM has a notch cut in the edge between some of the gold contacts. Orient the DIMM so this notch aligns with the bump in the printer's connector and insert the DIMM into the connector.



6

Press the DIMM body in until the metal retaining pins click.



7

Close the DIMM access door, reconnect all cables and cords, then turn the power switch on.

Congratulations!

You are now ready to print bar codes (and more) using your printer. To test your BarCodes & More, simply use your printer's control panel to print a PCL Font List. On most printer models, select "Information" and then "Print PCL Font List".

See the reverse side of this sheet for an example of the first page of a PCL Font List showing the BarCodes & More fonts. The PCL Font List may vary a little between different printer models, but the bar code fonts will be shown somewhere in the list.


TypeHaus Reorder Part Number: 11B584-20

Solutions
Business Partner



760.334.3555
www.typehaus.com

HP Color LaserJet PCL Font List



Page 1

USB STORAGE Resident Fonts

| Font | Pitch/Point | Escape Sequence | Font # | Font_ID |
|---|-------------|--------------------------------------|---------|---------|
|  | | | | |
| UPC 10mi l | /12.0 | <esc>(8Y<esc>(s1p12.0v0s0b0T | USB1 1 | |
|  | | | | |
| UPC 3m | /12.0 | <esc>(8Y<esc>(s1p12.0v0s3b0T | USB1 2 | |
| USPS ZIP | /12.0 | <esc>(15Y<esc>(s1p12.0v0s0b0T | USB1 3 | |
| ABCDEFGHIjÄ°ÇÑ;¿£\$#00~^*{ }~123éà LtrGothic | 16.67/9.5 | <esc>(8U<esc>(s0p16.67h9.5v0s0b6T | USB1 4 | |
| ABCDEFGHIjÄ°ÇÑ;¿£\$#00~^* LtrGothic | 12.00/12.0 | <esc>(8U<esc>(s0p12.00h12.0v0s0b6T | USB1 5 | |
| ABCDEFGHIjÄ°ÇÑ;¿£\$#00~^* LtrGothic | 10.00/14.0 | <esc>(8U<esc>(s0p10.00h14.0v0s0b6T | USB1 6 | |
|  Line Draw | 10.00/12.0 | <esc>(0B<esc>(s0p10.00h12.0v0s0b0T | USB1 7 | |
| ABCDEFGHIj OCR A | 10.00/12.0 | <esc>(00<esc>(s0p10.00h12.0v0s0b104T | USB1 8 | |
|  Code 3of9 | | | | |
| Code 3of9 | 8.11/12.0 | <esc>(0Y<esc>(s0p8.11h12.0v0s0b0T | USB1 9 | |
|  Code 3of9 | | | | |
| Code 3of9 | 4.69/12.0 | <esc>(0Y<esc>(s0p4.69h12.0v0s0b0T | USB1 10 | |
| ABCDEFGHIj Ñ £ \$ # \$ OCR B | 10.00/12.0 | <esc>(10<esc>(s0p10.00h12.0v0s0b110T | USB1 11 | |
|  Code 128 | | | | |
| Code 128 | 8.33/12.0 | <esc>(2Y<esc>(s0p8.33h12.0v0s0b0T | USB1 12 | |
|  Code 128 wide | | | | |
| Code 128 wide | 4.36/12.1 | <esc>(2Y<esc>(s0p4.36h12.1v0s0b0T | USB1 13 | |

Internal Scalable and Bitmapped Fonts

| Font | Pitch/Point | Escape Sequence | Font # | Font_ID |
|------------------------------------|-------------|-------------------------------------|------------|---------|
| Courier | Scalable | <esc>([] <esc>(s0p [] h0s0b4099T | INTERNAL 0 | |
| CG Times | Scalable | <esc>([] <esc>(s1p [] v0s0b4101T | INTERNAL 1 | |
| CG Times Bold | Scalable | <esc>([] <esc>(s1p [] v0s3b4101T | INTERNAL 2 | |
| <i>CG Times Italic</i> | Scalable | <esc>([] <esc>(s1p [] v1s0b4101T | INTERNAL 3 | |
| <i>CG Times Bold Italic</i> | Scalable | <esc>([] <esc>(s1p [] v1s3b4101T | INTERNAL 4 | |
| CG Omega | Scalable | <esc>([] <esc>(s1p [] v0s0b4113T | INTERNAL 5 | |
| CG Omega Bold | Scalable | <esc>([] <esc>(s1p [] v0s3b4113T | INTERNAL 6 | |
| <i>CG Omega Italic</i> | Scalable | <esc>([] <esc>(s1p [] v1s0b4113T | INTERNAL 7 | |
| <i>CG Omega Bold Italic</i> | Scalable | <esc>([] <esc>(s1p [] v1s3b4113T | INTERNAL 8 | |

[] Pitch: 0.10 - 576 [] Symbol set [] Point size: 0.25 - 999.75
See your Printer User's Manual for more information.