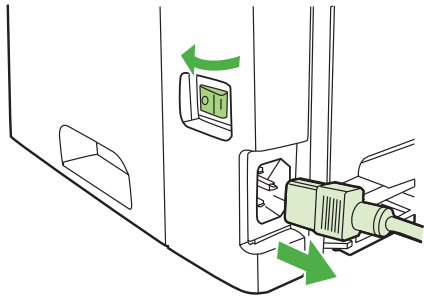


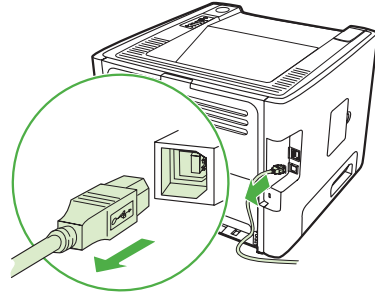
BarCodes & More

Installation & Test Guide

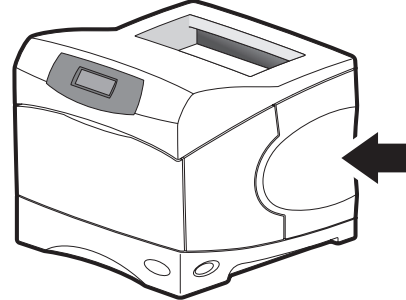
For HP LaserJets & MFPs with Compact Flash



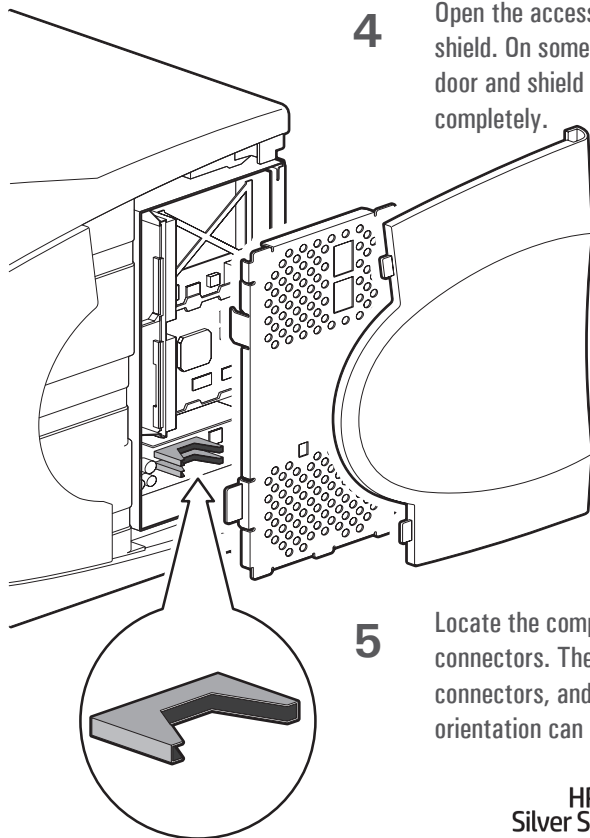
1 Use the power switch to turn off the printer and then unplug the power cord from the printer.



2 Unplug all remaining cables and cords from the printer.

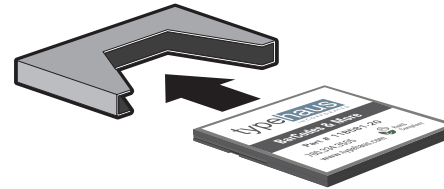


3 Locate the access door located on the side of the printer. The location can vary by model.

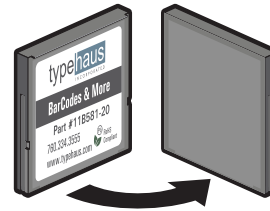


4 Open the access door and metal shield. On some models the door and shield may remove completely.

5 Locate the compact flash (CF) connectors. The number of CF connectors, and the location and orientation can vary by model.



6 Insert the BarCodes & More into any open CF connector. Do not remove any existing CF cards. The card will only insert in one orientation. If it does not slide easily, rotate it and try again. A very small amount of extra pressure will be necessary at the very end to make sure the card is completely plugged into the short pins at the base of the connector. Never use strong force. Strong force may damage your printer.



7 Close the shield and access door, reconnect all cables and cords, then turn the power switch on.

Congratulations!

You are now ready to print bar codes (and more) using your printer. To test your BarCodes & More, simply use your printer's control panel to print a PCL Font List. On most printer models, select "Information" and then "Print PCL Font List". See the reverse side of this sheet for an example of the first page of a PCL Font List showing the BarCodes & More fonts. The PCL Font List may vary a little between different printer models, but the bar code fonts will be shown somewhere in the list.

TypeHaus Reorder Part Number: 11B581-20

HP JetAdvantage
Silver Solution Partner



760.334.3555
www.typehaus.com

© 2019 TypeHaus, Inc. All rights reserved. (50082-190702A)

HP Color LaserJet

PCL Font List



STORAGE Resident Fonts

Font	Pitch/Point	Escape Sequence	Font #	Font ID
UPC 10mi L	/12.0	<esc>(8Y<esc>(s1p12.0v0s0b0T	USB1 1	
UPC 3m	/12.0	<esc>(8Y<esc>(s1p12.0v0s3b0T	USB1 2	
USPS ZIP	/12.0	<esc>(15Y<esc>(s1p12.0v0s0b0T	USB1 3	
ABCDEfghiJÄÂ°ÇÑ;¿£\$#&00''^'{}~123éà LtrGothic	16.67/9.5	<esc>(8U<esc>(s0p16.67h9.5v0s0b6T	USB1 4	
ABCDEfghiJÄÂ°ÇÑ;¿£\$#&00''^ LtrGothic	12.00/12.0	<esc>(8U<esc>(s0p12.00h12.0v0s0b6T	USB1 5	
Line Draw	10.00/14.0	<esc>(8U<esc>(s0p10.00h14.0v0s0b6T	USB1 6	
ABCDEfghij OCR A	10.00/12.0	<esc>(0B<esc>(s0p10.00h12.0v0s0b0T	USB1 7	
Code 3of9	10.00/12.0	<esc>(00<esc>(s0p10.00h12.0v0s0b104T	USB1 8	
Code 3of9	8.11/12.0	<esc>(0Y<esc>(s0p8.11h12.0v0s0b0T	USB1 9	
ABCDEfghij Ñ £ \$	4.69/12.0	<esc>(0Y<esc>(s0p4.69h12.0v0s0b0T	USB1 10	
ABCDEfghij Ñ £ \$	10.00/12.0	<esc>(10<esc>(s0p10.00h12.0v0s0b110T	USB1 11	
Code 128	8.33/12.0	<esc>(2Y<esc>(s0p8.33h12.0v0s0b0T	USB1 12	
Code 128 WIdE	4.36/12.1	<esc>(2Y<esc>(s0p4.36h12.1v0s0b0T	USB1 13	

Internal Scalable and Bitmapped Fonts

Font	Pitch/Point	Escape Sequence	Font #	Font ID
Courier	Scalable	<esc>([] <esc>(s0p []h0s0b4,099T	INTERNAL 0	
CG Times	Scalable	<esc>([] <esc>(s1p []v0s0b4,101T	INTERNAL 1	
CG Times Bold	Scalable	<esc>([] <esc>(s1p []v0s3b4,101T	INTERNAL 2	
<i>CG Times Italic</i>	Scalable	<esc>([] <esc>(s1p []v1s0b4,101T	INTERNAL 3	
<i>CG Times Bold Italic</i>	Scalable	<esc>([] <esc>(s1p []v1s3b4,101T	INTERNAL 4	
CG Omega	Scalable	<esc>([] <esc>(s1p []v0s0b4,113T	INTERNAL 5	
CG Omega Bold	Scalable	<esc>([] <esc>(s1p []v0s3b4,113T	INTERNAL 6	
<i>CG Omega Italic</i>	Scalable	<esc>([] <esc>(s1p []v1s0b4,113T	INTERNAL 7	
<i>CG Omega Bold Italic</i>	Scalable	<esc>([] <esc>(s1p []v1s3b4,113T	INTERNAL 8	

[] Pitch: 0.10 - 576 [] Symbol set [] Point size: 0.25 - 999.75
See your Printer User's Manual for more information.